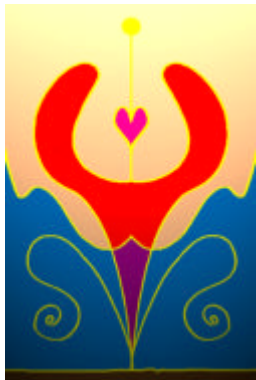


Mana in Auckland presents
Interpersonal Skills Training
March 5-7 2010

For EVERYONE and especially PROFESSIONALS
WORKING WITH PEOPLE

Widen, deepen and enrich your skills repertoire, whilst exploring your own emotional competence. This proven and substantial course, rich in explanation, demonstration and real life exercises and practice, gives a chance to explore, deepen, and enrich the "space between" in the interpersonal dynamic.



This practical and experiential workshop facilitated by Val Montague, Anne Bailey and Kathleen Ryan is based on the book and course "Helping the Client" by John Heron. All 3 have many years experience of teaching Peer Counselling using the John Heron (et al) model of Co Counselling International.

Artwork: Heart by John Heron

www.co-operacy.info www.human-inquiry.com

or phone 078668972/0273935565 for more information or to ask about a possible free introductory class.

Central Auckland Venue
\$660 (students \$420)

To register pay \$100 deposit by Visa /MasterCard at our on-line secure site or by direct credit to bank account 02-0304-0312089-000 or mail a cheque.

CANCELLATION: Ten days or more prior to course deposit is fully transferable to another course (within 12 months), or refunded less \$30 fee. (less than 10 day cancellation forfeits deposit).

RD 1, Coromandel, New Zealand
Tel 647 866 8972 Fax 647 866 8214
be@manaretreat.com www.manaretreat.com